

## Software Installation Guide

Throughout the lifetime of the UltraVision 2 system it may be necessary to install updated versions of the UltraVision 2 application software. This guide will provide instructions to do so on site without remote assistance from WinProbe.

### 1. Uninstalling Previous Application

Once the file for the updated application has been obtained, it will be necessary to first uninstall the previous version of the application. First, navigate to windows settings and select Apps as shown in figure 1.

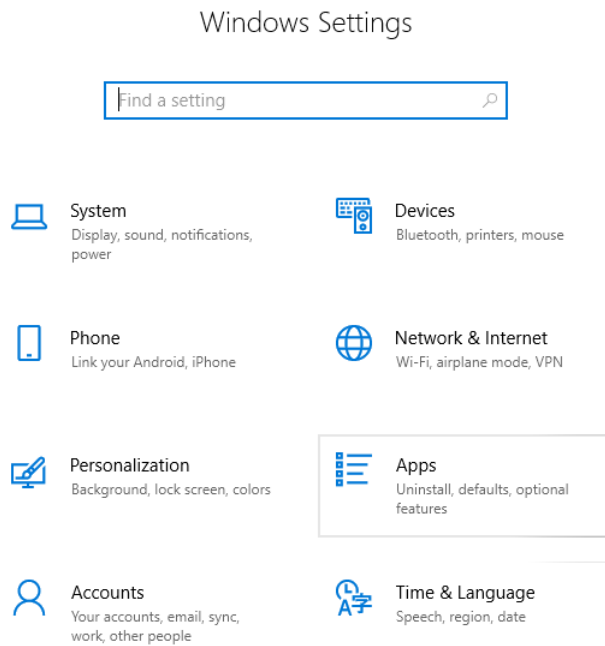


Figure 1. Apps in windows settings menu

In the apps menu, select UltraVision 2 and then select uninstall. Agree to the following prompts to complete the uninstall process.

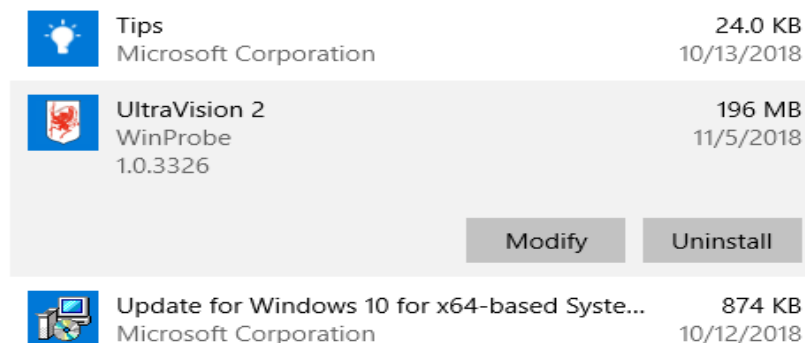


Figure 2. Uninstall UltraVision 2

## 2. Installing Updated Application

Once the previous version of the application is uninstalled, the updated version may be installed. First, navigate to the installation zip file and open the folder. Then select the UltraVision.Setup file as shown in figure 3.

Name	Type	Compressed size	Password ...	Size	Ratio	Date modified
getOutput	Text Document	3 KB	No	7 KB	59%	11/5/2018 5:54 PM
setup	Application	225 KB	No	502 KB	56%	11/5/2018 5:52 PM
<input checked="" type="checkbox"/> UltraVision.Setup	Windows Installer Package	64,184 KB	No	65,142 KB	2%	11/5/2018 5:54 PM

Figure 3. UltraVision installation file

Next, follow the prompts to complete installation as shown in figures 4-8.

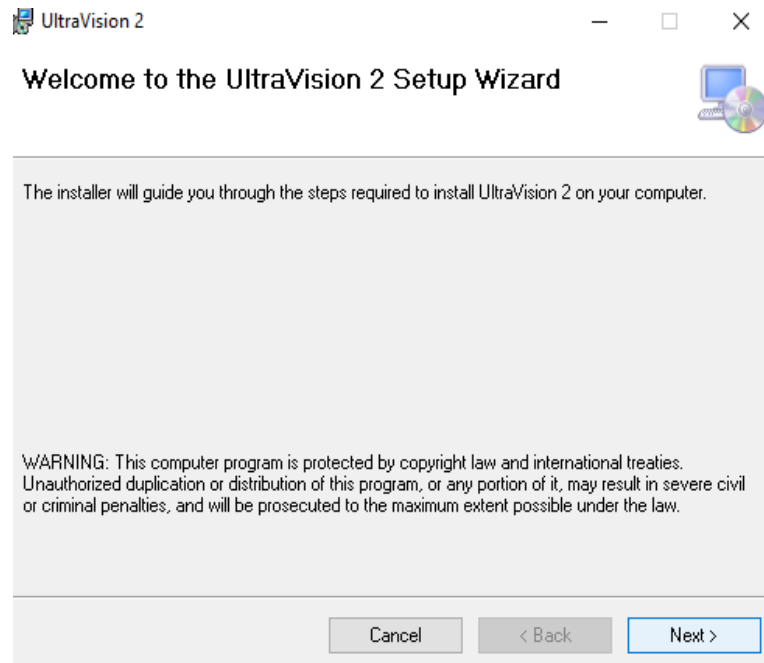


Figure 4. UltraVision Setup Wizard. Click next

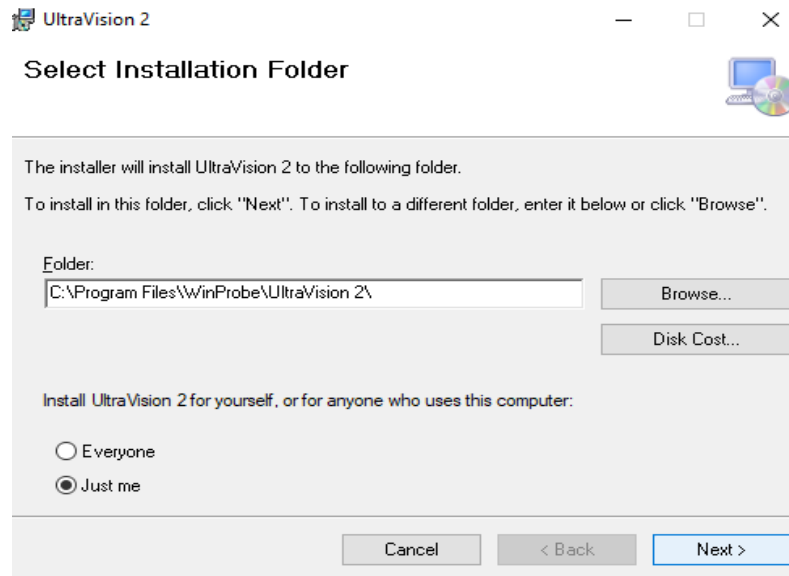


Figure 5. Select installation folder. The default options are appropriate. Click next.

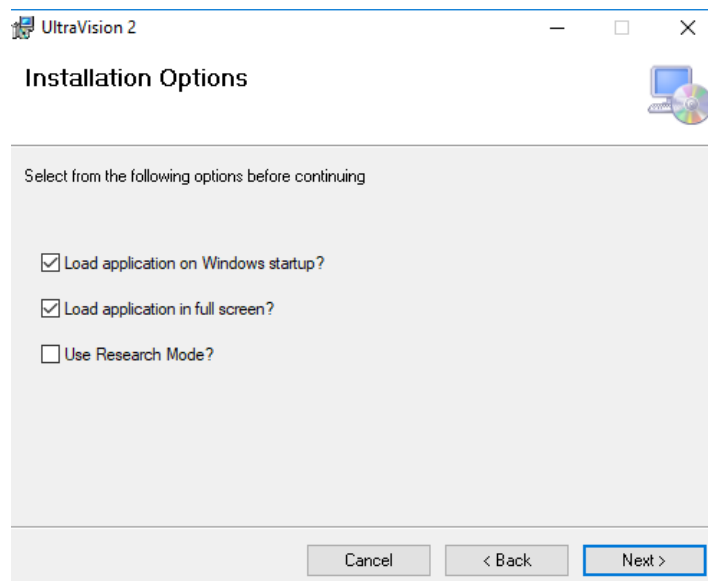


Figure 6. Installation options. The default options are already checked, if the user is utilizing research mode they may check the third option before clicking next.  
**NOTE: If any options are checked/unchecked unintentionally it will be necessary to uninstall and reinstall the application to obtain the intended installation options**

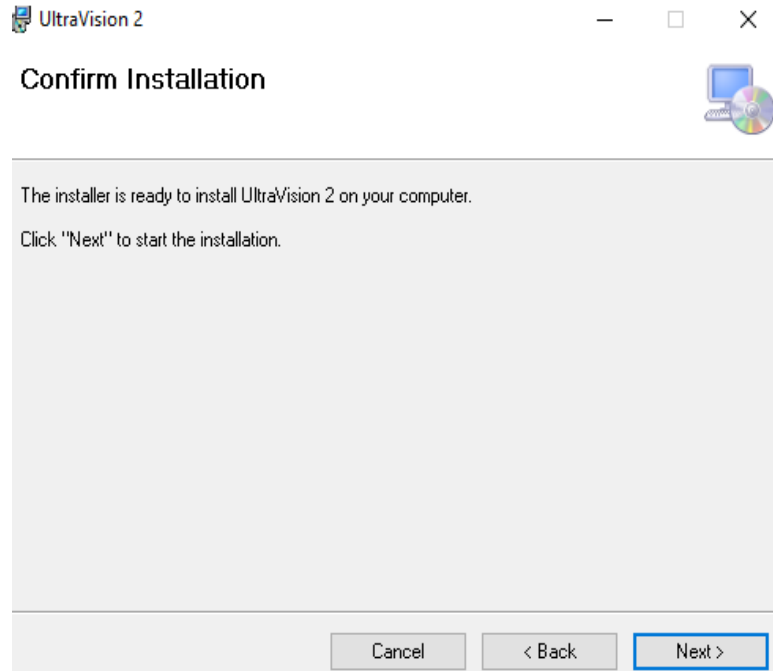


Figure 7. Confirm installation. Click next

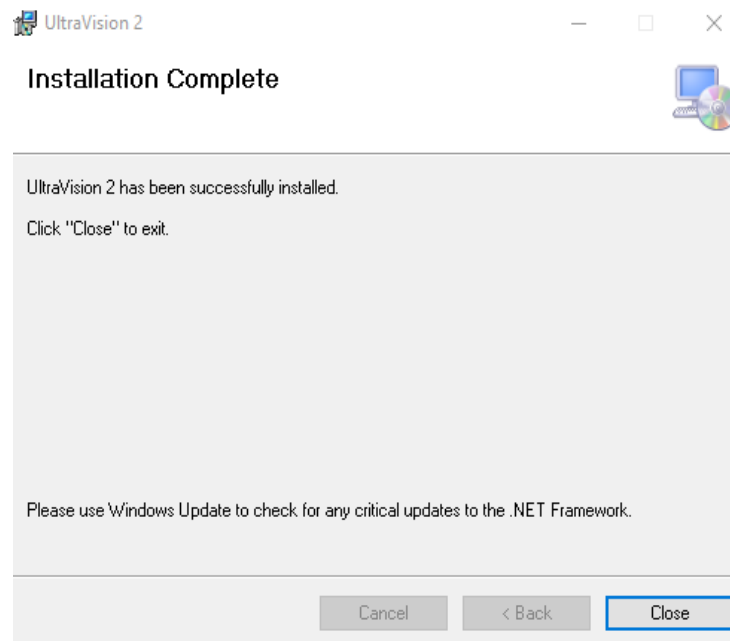


Figure 8. Installation Complete. Click Close

Once the installation is complete, the app can be launched from the UltraVision 2 icon on the desktop. The updated application will open in full screen.